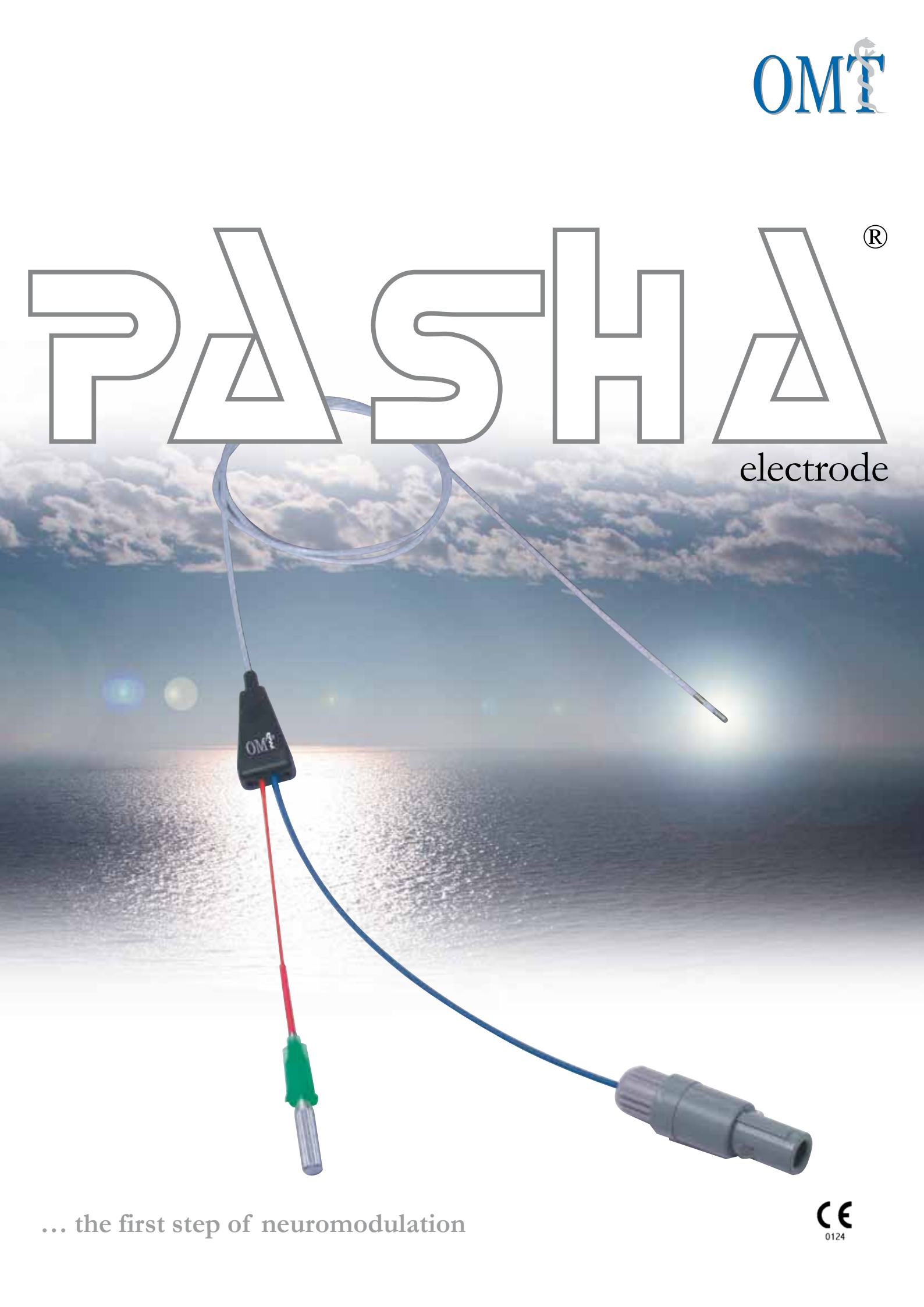


PASHA[®]

electrode



... the first step of neuromodulation

The Problem:

- The only thing the patient is interested in is a rapid pain relieving.
Step diagnostics and treatment take a lot of time.
Unfortunately as time goes on we have even less time.
- Although modern invasive treatment of pain is effective, it often isn't included in health insurance benefits.
- In addition to that the moment we start some treatment we neither know which steps will be necessary nor do we know how many of them we will need.
- Several cost-intensive therapies mean high financial charges for the patient, because each diagnostic step will be followed by the corresponding treatment.
- The accessibility to some of the structures is difficult for example sacral ganglia or thoracic spinal nerve roots.
- It sometimes happens that you really can't locate the segments in a precise way - In case of posttherpetic neuropathy or in case of degenerative changes for instances .

So why shouldn't we combine step diagnostic with therapy?

The Solution:

PASHA®-electrode

...the allround-tool for the innovative pain specialist.

PASHA® -electrode offers:

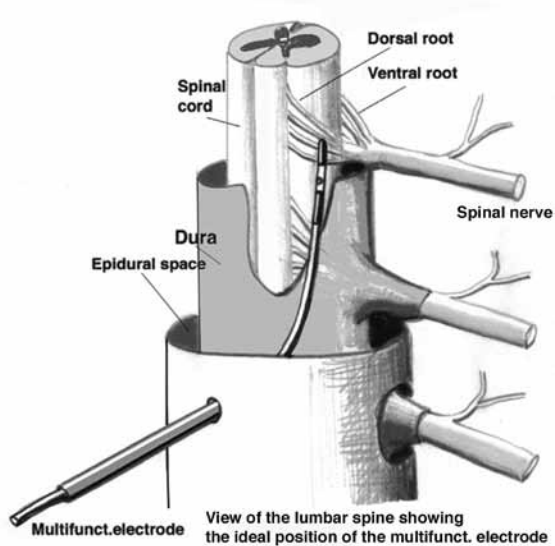
- Perfect placing through stimulation (the way we have it at SCS)
- The possibility of multiply directed anaesthetic at different levels (like in facet diagnostics) specifically adhesiolysis
- The carrying out of pulsed radiofrequency at any place (PRF)
- The possibility of giving a statement referring to the effectiveness of SCS, as well as to the effectiveness of morphin before the implantation of a pump.

PASHA® -electrode ...

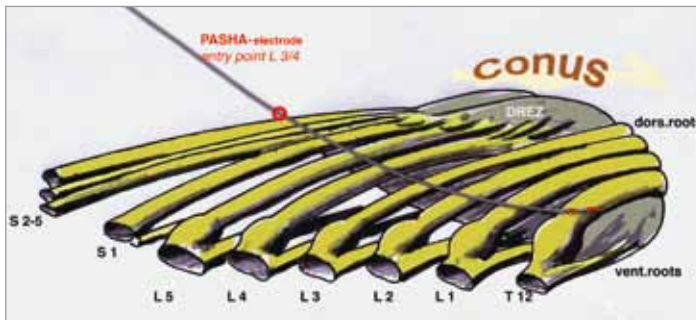
- You needn't change between cannula, catheter and electrode
- You minimize any complication because you need only one access
- You also minimize the costs combining the different working steps so that the patient has to pay only for one instrument.
- That's why it makes it easier for the patient to accept different therapies.

PASHA® -electrode doesn't place any restrictions

The advantages of **PASHA® -electrode** are unique and relieve the working day of invasively working pain specialists, anaesthetists, orthopaedists, neurosurgeons and surgeons.



The standard approach is the paramedian contra lateral access. The multifunctional electrode is placed epidural over the dorsolateral parts of the spinal cord over the DREZ region when treating the cervical and thoracic spine.



The standard target for the treatment of the lumbar nerves is the conus medullaris. Sacral nerve pain is treated by stimulating the cauda equina.



Fluoroscopy is an essential adjunct for performing a correct placement of the multifunctional electrode. Please notice the paramedian position of the electrode.

PASHA[®] electrode

Technical Data

PASHA®-electrode

Multifunction electrode 4F with lumen and thermosensor

Outer diameter	4F (1,38 mm, max.)
Effective length	30 cm / 60 cm
Number of electrodes	2 (bipolar)
Length of electrodes	3 mm
Electrode spacing	4 mm
Injection lumen volume	112 µl / 225 µl
Stylet (straight)	
Length/stylet (effective)	427 mm / 727 mm
Diameter/stylet	0,36 mm
Single package	Double Sterile within Pouches (ETO)

Order informations

Product name	Product number	Length
PASHA-electrode Multifunctional electrode	PC4-30 / PC4-60	30 cm / 60 cm
Introducer Needle 14 G	PCC-100T	10 cm
Autoclavable adapter for HF-generators with pulse-mode (PRF)		
	AK-STR	30 cm
	AK-RCS	300 cm
	AK-RDG	300 cm
	AK-BAY	300 cm
Sterile connection cable for trails before implantation of a permanent spinal cord stimulation system	AK-ANS	150 cm
Package 5 pieces/box		

Manufacturer
and
distribution:



OMT GmbH & Co. KG
Daimlerstr. 25 D-78665 Frittlingen

Tel. +49 7426 9477080
Fax +49 7426 9477089

Tel. +49 7426 9477080
Fax +49 7426 9477089

www.omtmed.com
info@omtmed.com

